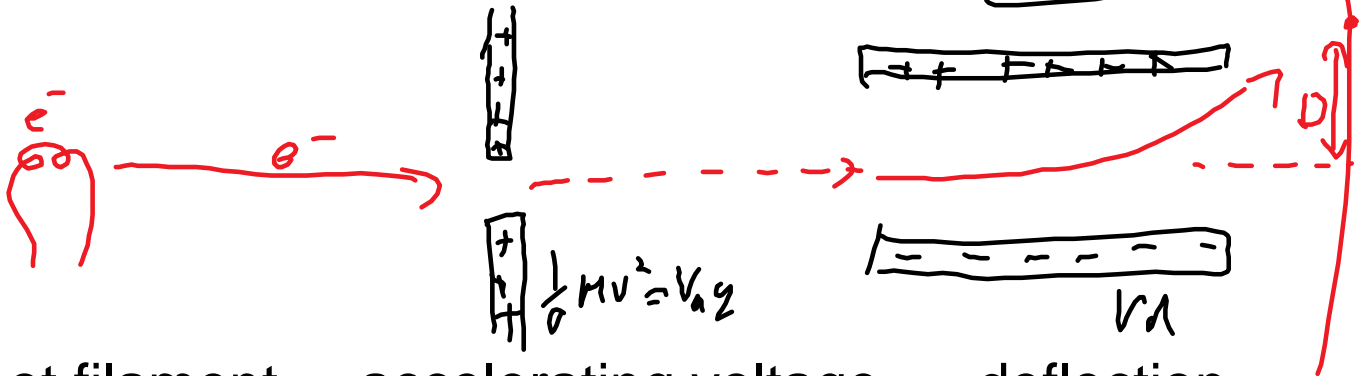
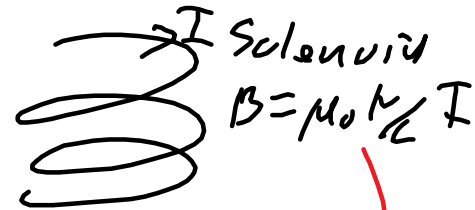


Cathode Ray Tube, CRT Double Lab



hot filament
 Part 1
 $V_a = 500V$

accelerating voltage
 $V_a = 500, 600 \text{ or } 700V$

deflection
 $V_d = \text{batteries}$
 or $I \rightarrow \text{solenoid}$

D	V_d
0	0
+	
-	
...	

obs
 $V_d = \text{max}$
 $V_a = 500, 600, 700$

D	I (A)
0	0
+	
-	
...	

max
 $\downarrow 5 \text{ values}$

obs
 $I = \text{max}$
 $V_a = 500, 600, 700$

11 points